



## Club Notes



**General Meeting:** Nov. 15, 2013 7:30 PM

If your last name is R-U please bring snacks.

**New Members:** Unless otherwise stated, General Meetings are on the third with Tuesday of the month at the church at 7:30 pm. You are invited and encouraged to attend! There is a silent auction and door prizes at every meeting.

**Next Board Meeting:** Monday Nov. 11th Board Meeting.

**Show Meeting:** Thurs. Nov. 24, 7 p.m. at the shop upstairs.



### In This Issue:

- ❖ Club Notes
- ❖ General Information
- ❖ Meeting Minutes
  - Board Meeting
  - October 9th
  - General Meeting
  - October 17th
- ❖ Rock Rumbles
- ❖ Announcements
- ❖ Show Schedules
- ❖ Field Trips
- ❖ Gem of the month
- ❖ Bench Tips by Brad Smith
- ❖ Kids Korner
- ❖ Shop Schedule
- ❖ Map To New General Meeting Place

**MGSCV Petrograph - November 2013**  
**Monthly Bulletin of the Mineral & Gem Society of Castro Valley, inc.**

This publication is the bulletin of the Mineral and Gem Society of Castro Valley, Inc., a member of the California Federation of Mineralogical Societies, Inc., the American Federation of Mineralogical Societies and the North Bay Field Trip Association.

### **Bulletin Submission Policy**

Submission deadline is the second Friday following the *General Meeting* (normally the second Wednesday of the month.) Anonymous contributions will not be considered for publication in the Petrograph; however, if requested at the time of submission, the contributor's name can be withheld. Members are encouraged to submit articles that may be of interest to the general membership. The bulletin editor reserves the right to edit any submitted articles or omit any submission from publication. Source must be cited for material quoted from other authors. Permission to reprint Petrograph articles is hereby granted provided properly cited.

### **2013 MGSCV Officers**

#### Elected

President - Bonnie Andrade	<a href="mailto:President@mgscv.org">President@mgscv.org</a>	
Vice President - Mike Mc Bride	<a href="mailto:VP@mgscv.org">VP@mgscv.org</a>	
Secretary - Sheryl Cooper	<a href="mailto:Secretary@mgscv.org">Secretary@mgscv.org</a>	(510) 589-8858
Treasurer - Betty Milam	<a href="mailto:Treasurer@mgscv.org">Treasurer@mgscv.org</a>	
1 <sup>st</sup> Year Director - Michael Cox	<a href="mailto:Director1@mgscv.org">Director1@mgscv.org</a>	
2 <sup>nd</sup> Year Director - Jodi Minshall	<a href="mailto:Director2@mgscv.org">Director2@mgscv.org</a>	
3 <sup>rd</sup> Year Director - Norm Hodgson	<a href="mailto:Director3@mgscv.org">Director3@mgscv.org</a>	
Federation Director - Ron Hasemeyer	<a href="mailto:Federation@mgscv.org">Federation@mgscv.org</a>	
Shop Manager - Beth Farmer	<a href="mailto:ShopManager@mgscv.org">ShopManager@mgscv.org</a>	
2014 Show Chairman - Cathy Miller	<a href="mailto&gt;ShowChair@mgscv.org">ShowChair@mgscv.org</a>	
Membership - Tony Cooper	<a href="mailto:membership@mgscv.org">membership@mgscv.org</a>	510-589-5292
Editor - Diana Cohoon	<a href="mailto:Editor@mgscv.org">Editor@mgscv.org</a>	
Past President - Ron Miller	<a href="mailto:pastpresident@mgscv.org">pastpresident@mgscv.org</a>	

#### Appointed

Scholarship Chair - Mary Howell	
Librarian - Mary Howell	
Historian - Jamie McDonald	
Purchasing Agent - Beth Farmer	
Education Coordinator - Shirley Buschke	
Field Trip Coordinator - Ron Hasemeyer	
Parliamentarian - Doc Buschke	
Reception/Hostess - Ann Vargas/Dan Gilson	
Sunshine Reporter - All members	
Door Prizes - Bonnie Andrade	
Web Master - Tony Cooper	<a href="mailto:webmaster@MGSCV.org">webmaster@MGSCV.org</a>

**MGSCV Petrograph - November 2013**  
Monthly Bulletin of the Mineral & Gem Society of Castro Valley, inc.



**Publication Staff**



✧Contributors: Shirley Buschke, Jodi Minshall, Sheryl Cooper, Mike McBride

**BOARD MEETING**

Oct. 7<sup>th</sup> 2013

Submitted by **Sheryl Cooper**

The meeting was called to order at 7:00 pm. In attendance were **Bonnie Andrade, Mike McBride, Sheryl Cooper, Betty Milam, Beth Farmer, Cathy Miller and Mike Cox.**

**Treasurer:** The September treasurer's report by Betty Milam was reviewed. We have a new tenant next door that shares the utility meter with us. The property manager asked for copies of the last 12 months of PG&E bills. Beth Farmer moved to accept the reports as presented. Mike Cox seconded the motion and it was carried unanimously.

**Minutes:** **Beth Farmer** moved to accept the September board minutes as printed in the Petrograph. Betty Milam seconded the motion and it was carried unanimously.

**Shop:** Beth Farmer purchased new saw blades and genie wheels. The 12" saw drive motor burnt up. She is looking around for an old c-frame motor that runs at 3rpm.

**Show:** **Cathy Miller** went by the Pavilion to look at the new stage in Hall 4. The dimensions are 15'9" by 13'5". This will affect two dealers. She is adjusting the layout and will see if a dealer can use the stage area. There are also lights hanging from the ceiling in Hall 4. She is still looking for a tool dealer and display dealer for the show. A mineral dealer has been recommended. A couple of dealers are being

moved to Hall 1 for this year only. The next meeting will be Oct. 24th.

**Membership:** We have 169 current members. There are three new members and one renewal since last month.

**Sunshine:** **Pat Rigor** wants to get back to the shop. She is waiting for the doctor to clear her.

**John Gullak** is in the hospital for dehydration.

**Announcements:** Open House and Sale on Saturday, October 26th. There will be tiger eye rough donated by **Simon Chen**, a few pieces of equipment, cabbing material rough and jade from the **Leslie DeGross** estate.

**Unfinished Business:** The November general meeting is when the new board is voting on.

We discussed letting **Mike McBride** be our federation representative while still holding the VP position. **Beth Farmer** moved to have **Mike McBride** be our federation representative and VP. **Mike Cox** seconded the motion and it was carried unanimously.

The next board meeting will be Nov. 11th.

The meeting adjourned at 8:00 pm.

**GENEAL MEETING**

Submitted by **Sheryl Cooper**

Oct. 17<sup>th</sup> 2013

**Bonnie Andrade** called the meeting to order at 7:45 pm. There were 17 members present and 1 guest.

## MGSCV Petrograph - November 2013

Monthly Bulletin of the Mineral & Gem Society of Castro Valley, inc.

**Bruce Langdon** brought his grandson **Oscar** to the meeting.

**Minutes:** **Betty Milam** moved to accept the June minutes as printed in the Petrograph.

**John Caudill** seconded the motion and it carried unanimously.

**Program:** Show and Tell

**Beth Farmer** brought in a bracelet and ring that belonged to her great grandmother. She is working on lengthening the bracelet. She made a rubber mold of one link and many wax moldings to get a clean mold. She hopes to be casting soon.

**Jim Ewing** brought in 2 cabs and a facet to share. One of the cabs has a picture of a volcano on it and the other one looks like a pussy willow tree on it.

**Cathy Miller** shared a variety of crystals she picked up and the Alamo estate sale. These crystals came from all over. One label said Turkey Park, New Mexico. There were some pieces that were the reverse. You could see where crystals had been.

**Sheryl Cooper** had 2 moss agate cabs. I picked up the material from the back of the shop for nearly free. One piece was a discarded broken cab that I free formed.

### **Prince Rupert's Drop YouTube video**

Hot glass dropped into cold water immediately gives you a piece of teardrop shaped glass with a tail on it. The teardrop end is so hard it cannot be broken. They made different attempts to break it. But the tail end is very fragile and the slightest scratch will shatter the whole piece. They showed the explosion of glass in slow motion

up to 100,000 fps. They also explain the science behind glass stress and what is going on. The video is 6-1/2 minutes long. [www.youtube.com/watch?v=xe-f4gokRBs](http://www.youtube.com/watch?v=xe-f4gokRBs)

**Shop:** We received a tiger eye donation from **Simon Chen**. These pieces and more will be available for purchase at the Open House and sale on Oct 26th. Beth Farmer has ordered genie wheels and a motor for the 10" saw.

Please, clean up around you and especially the floor.

**Show:** The show is a week earlier this year on Feb. 21, 22 & 23. We need everyone to help. There will be no snack bar this year, but we will have food trucks all three days. We are real close to having a full show of dealers. The sign-up sheets will be at the December meeting. **Sally Lacy** will pick out a piece from **Ed Rigor's** collection for the raffle. There will be a live auction on Sunday afternoon. Thank you for the donations. We could still use more donations for the auction and the door prizes. We still need someone for Security Manager, Food Manager, and Lighting Manager. The next show meeting will be Oct 24th.

**Editor:** Keep sending your articles to **Diana Cohoon** at [editor@mgscv.org](mailto:editor@mgscv.org). She is looking for articles from kids also.

**Membership:** There are currently 169 members. Three new members have joined since last month and one renewal.

**Juniors:** One junior comes about every other week with her mom.

## MGSCV Petrograph - November 2013

Monthly Bulletin of the Mineral & Gem Society of Castro Valley, inc.

**Education:** **Diana Cohoon** had the second half of the lost wax class. Everything went well as they finished their items.

There are two seats open for beginning faceting on Saturday morning.

**New Business:** Are you looking for equipment? Don't forget to check the white board next to the trim saws. It has equipment for sale listed on it all the time. There is a jewelers bench and enameling kiln for sale.

**Drawings:** The name for the \$100 member drawing was Fern Brown; unfortunately he was not present to win.

Guest Ticket -Bruce Langdon

Attending Member Tickets - **Diana Cohoon, Maya Caudill-Merida, Stephen Caudill-Merida, John Caudill, Mark Caudill, Beth Farmer, Sheryl Cooper, Jim Ewing, Mike Cox, Cathy Miller, Betty Milam, Mark Montgomery, and George Kozakura**

The meeting adjourned at 8:30 pm and the silent auction mayhem ensued.



### ROCK RUMBLES

By Shirley Buschke

You can sure find some interesting reading in some of our old lapidary magazines. A 1973 issue of *Rock and Gem* described retrieving diamonds from the ocean off the shore of Africa. It also had

an article on Australian opals. I recognized the names Coober Pedy, Andamooka, Lightning Ridge and Yowah but I had not heard of Quilpie, Eulo, White Cliffs and Tintinbar. Opals come from southeastern Australia. Later in the article it mentioned opals from an area 125 miles north of Los Angeles at a place called Nowak's diggings. Wonder if it still exists?

**Mike McBride and Beth Farmer** set out the estate rocks donated to the club. Lots of great jade and lots of tiger eye. Prices were fantastic. Hope you got in on the sale. Already polished specimen size petrified wood was also included in the collection or you could buy stuff by the pound and do it yourself.

Our faceting instructor **John Gullak** is back in the hospital. Respiration problems this time.

This is being written before the Concord show. It is as good as ours so I hope you made it there. **Naomi Morgan** always shows off her intarsia here and it is worth the trip just to see her work. She is also a member of our club and is usually here on Thursday and is always eager to help you get started. She even keeps after **Horace Robertson** to finish his sun dial.

**Doc Buschke's** turquoise tree is finished and you can buy tickets for the raffle. All proceeds to the club. Let's beat last year's total of \$400.

Another magazine, (*R and G* 1985) features a story on *GE* making jadeite. Same idea as there making synthetic diamonds for industrial use. But the cost is too great to

## MGSCV Petrograph - November 2013

Monthly Bulletin of the Mineral & Gem Society of Castro Valley, inc.

produce commercially. Color can be controlled by adding chemicals, chromium leads to greener green and even black; manganese means lavender.

Good to see **Dave Gordon** back in the faceting room. And **Mary Howell** made it back for a couple hours recently. Her husband is still in a rest home.

**Ed Rigor** was busy checking out our casting equipment since **Jim Ewing** was concerned about some recent problems. Between the two of them, everything should be OK.

Silversmith **Lee Chavez** joined us on the 30th. He plans to be back Nov. 6. This accomplished artisan wants to learn how to cut stones so our fabulous teacher, and junior mentor, **Mark Montgomery** offered to get him started. He had some beautiful charoite he wanted to cut. He also showed us, by picture, a set of ear rings and necklace he made for his wife with **Doc Buschke's** carvings of leaves.

### ANNOUNCEMENTS

I am sorry to announce that **John Gullak** has been sent home from Kaiser for the last time. He was sent home in an ambulance today November 2, 2013, with Hospice care. He has day and night people at his home, but a phone call or a card would greatly appreciated. He has been our Saturday faceting instructor for approximately 30+ years, and had his 94<sup>th</sup> birthday at the shop last May. We all have wonderful memories of John at the shop, and unfortunately it will be no more.....

**SHOW MANAGERS NEEDED.** The club needs volunteers to help manage certain

areas during our show. We will train people in these areas if needed. The manager helps direct volunteers on the task at hand. They help organize these areas and help see that things go smoothly. If you have questions or would like to volunteer come to our monthly show meeting or you can contact the Show Volunteer Coordinator at:

mikemacmcbride@comcast.net. The following are positions that need to be filled: 1) Security Manager. For Friday only. Assign radios and jackets. 2) Food Service Manager. Coordinate food trucks, vendor dinner, coffee and limited snack bar. 3) Sign Manager. Putting up and taking down signs. Buying new signs. 4) Lighting Manager. Setting up and taking down extension cords and helping with our showcase lighting. 5) Skirting Manager. For Monday, Wednesday and Sunday takedown only. Skirting vendor tables. 6) Geode Cracker Manager. For Friday only. Cracking geodes for the public. 7) Spinning Wheel Manager. Youth spinning wheel for the public. Please consider volunteering for one of these positions and help continue to make our show the best in the west.

Thanks, **Mike Mc Bride**

Hi All,

To fill the spaces for Exhibits will take extra extra effort for the 2014 show. So please contribute at least one case. I am inviting all the clubs in California to participate; in fact, I am inviting all the Federation members to participate and calling it an invitation to exhibit "The Best of the West". Heck, we are even inviting non-members but encouraging them to join



## MGSCV Petrograph - November 2013

Monthly Bulletin of the Mineral & Gem Society of Castro Valley, inc.

up. It sounds like we will use about 45-55 cases which is about double what we normally use. Many members already put in 2-4 cases but we can't always count on them. Heck, we don't even know if we have that many cases that are useful. But let's move forward as best we can and support our show's fund raising efforts. Comments and ideas accepted.

Members (or anyone wanting to put a case in) can call me directly 510-744-1564. I would like to have those 40 cases done by the dinner the first of December.  
Cheerfully yours, Norm

This note is from Mark Isaacs for the membership:

Looks good, you can also add the Raytech direct link for UV where you see fit.

<http://www.raytechultraviolet.com/>

Also You can note Raytech UV lamps are made in the USA at Raytech's factory located in Middletown, Conn.

### SHOW SCHEDULES

#### Contra Costa Mineral & Gem Society

Concord, Ca.

November 2<sup>nd</sup> & 3<sup>rd</sup>

Centre Concord 5298 Clayton Rd.

925-289-0454

[showtime@ccmgs.org](mailto:showtime@ccmgs.org)

<http://ccmgs.org>

#### Sacramento Mineral & Gem Society

Sacramento, Ca

November 9<sup>th</sup> & 10<sup>th</sup>, Sat. 9-5, Sun 9-4pm

#### Sutter Buttes Gem & Mineral Society

Yuba City, Ca

November 9 & 10<sup>th</sup>, Sat. 10-5pm, Sun. 10-4pm

Yuba Sutter Fair grounds- Franklin Hall

422 franklin ave

Kartie Slightam [530-673-](tel:530-673-964)

[964mktalternatives@comcast.net](mailto:964mktalternatives@comcast.net)

[www.sutterbuttes.net](http://www.sutterbuttes.net)

#### Oxnard Gem & Mineral Society

Oxnard, Ca

Nov. 16<sup>th</sup>-17<sup>th</sup>, Sat. 9-5pm, Sun.10-4pm

800 Hobsdon Way

Brett Johnson, 805-822-3836

[Show\\_info@oxnardgem.com](mailto:Show_info@oxnardgem.com)

[www.oxnardgem.com](http://www.oxnardgem.com)

#### Livermore Valley Lithophiles

Livermore, Ca.

November 23<sup>rd</sup> & 24<sup>th</sup>, Sat. 10-5pm, Sun. 10-4pm

3131 Pacific Ave, off So. Livermore ave.

925-371-0699

[info@lithophiles.com](mailto:info@lithophiles.com)

### Field Trips

#### Rockhound Field Trip Fanatics

##### Area 54 Last Blast

Firebaugh, Ca

December 28<sup>th</sup>, 9-5pm

Nees ave & I5, Chevron Travel Plaza

## MGSCV Petrograph - November 2013

Monthly Bulletin of the Mineral & Gem Society of Castro Valley, inc.

559-250-5057

Contact Kris Rowe @

<http://rockhound-field-trips.ning.com>



### GEM OF THE MONTH

Submitted by Shirley Buschke

This month's gem was born in England and he can't hide that accent. His two children are all grown up and he has 3 adult children from a second marriage. His wife is a nurse. When asked why he comes to our shop from San Jose, he said he broke his hip and started to think about things he would like to do to keep busy. His dad was a wood carver who specialized in sculpture and repaired many church icons. He, too, likes to work with wood. His specialty is furniture and picture frames. He said he went to an art fair, thinks it was in the Napa Valley, and saw faceting. Seemed to be interesting and when he broke his hip he thought maybe it would be a good idea to look into it.

Our gem has an interesting work background. He graduated from East Anglia Polytechnic and received a degree in electronic engineering. He has worked in

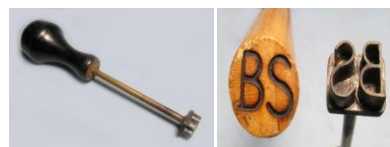
the British Antarctica working on a physics atmospheric program. He also spent time in Italy but left. Seems scandal was the norm in the area so he left. Other jobs followed including two years in the Netherlands. And one day the company boss that he had worked for in Italy asked him if he would like to work in Cupertino. He had liked Italy so he said "Yes" and then he found out Cupertino is in California. His current job is in software developing and writing.

So back to that interest in faceting. What better way to find out than to use the internet and he found our club and one of the few that has faceting as part of the offerings. That engineering comes out. He loves to develop his own patterns. He loves symmetry but not always in the round, sometimes a little askew but still in a symmetrical pattern and cubic zirconium because it is dependable.

Who is our gem? Roland Araja. GEM OF THE MONTH

### BRAD SMITH BENCH TIPS

#### MARKING YOUR TOOLS



It makes sense to mark your tools if you ever lend them to friends or take them out to classes or workshops. Question is how to mark them permanently. For metal tools, I



## MGSCV Petrograph - November 2013

Monthly Bulletin of the Mineral & Gem Society of Castro Valley, inc.

use a very small ball bur running fast in the Dremel or ForeDom to "engrave" my initials. Other times I'll form the initials with a number of hits with a center punch.

But for hammer handles and other wooden tools, the country boy in me came back and thought "Why not make a branding iron?" If you'd like to try one, all you need is a little scrap copper or nickel about 22-24 gauge, a piece of heavy brass or copper for a base, about 6 inches of metal rod and a piece of wood for the handle.

I formed my initials from a couple 4mm strips of sheet nickel. The "S" was one piece, but the "B" was three pieces soldered together with hard. (Remember to form the letters backwards). I then soldered the letters with medium onto a piece of 1/8 inch thick brass bar to act as a heat sink. Finally, I soldered a piece of 1/8 round rod on the back of the brass bar as a shaft to join to a wooden handle.

-----

### **BENCH TIPS HOLIDAY SPECIAL**

If you find these monthly tips useful, then think how nice it'd be to have the full bench tips reference guide for your shop or as a present for a jewelry friend. Between now and Thanksgiving I'm offering a Holiday Special that includes a free bonus pack of jewelry articles with every copy purchased.

"Bench Tips for Jewelry Making" contains 101 of the most popular and useful bench

tips organized into ten main problem areas. It's filled with close-up photos and has a detailed index to help find the solution you need by key word. Get your copy by going directly to my printer at

<http://CreateSpace.com/3976439>

Upon ordering the book, you will receive a confirmation email. This is your proof of purchase. Forward a copy of this to me at <benchtips@yahoo.com> to receive your free bonus pack.

The articles include:

1. Cuttlebone Casting - Get wonderful textures quickly and easily
2. Bezel Basics - Hints for making a perfect bezel every time
3. Make Your Own Wax Pen - You'll love this \$20 electric wax tool
4. Depletion Gilding - An easy way to avoid tarnish on your pieces
5. Setting Up A Home Shop - Tool tips and safety considerations
6. Building a Jewelry Web Site - Develop a plan to save money

**More Bench Tips by Brad Smith are at [facebook.com/BenchTips/](https://www.facebook.com/BenchTips/)**

**or see the book "Bench Tips for Jewelry Making" on Amazon**

### **KIDS KORNER**

On vacation.

There has been an online discussion about attracting more members to the general meetings. Some of the members

## MGSCV Petrograph - November 2013

Monthly Bulletin of the Mineral & Gem Society of Castro Valley, inc.

have come up with some ideas, and I will print the here. We would like some feedback at the general meeting, or by email to the editor and I will pass it along.

**Jody Minshall** talked about a 50/50 raffle, and here is how it goes a 50/50 raffle is where you sell raffle tickets for \$0.50 each, three for a dollar, or 20 for \$5. The host of the event usually splits the pot with the raffle winner, and we could put the clubs half of the pot in the scholarship fund or the building fund. One issue is if the group is small the prize will be small too. We could put a split limit of \$10, meaning that under \$10 there is no split pot and the winner takes all. We used to do 50/50 raffles at little league games and the winners portion of the pots were consistently about \$15-\$30 from a pool of 30-50 people. The amount that goes to the club is small but it primarily intended to help people have more fun at the meetings. We should add \$5.00 to the \$100.00 prize given to a member that is at the meeting when the name is drawn and the person is not present.

This from our President; Hi, this is the President speaking. We have about 175 members, in our club. Each of you joined the club because you like beautiful color rocks and gems stones. You also get to use our shop free and get free training from our instructors that volunteer one or two nights a week. We have field trips to collect rocks. I had so much fun going on field trips in back in 60's + 70"s. This is our educational club and lots of fun. We have our annual gem show every year. Some

members take time off from work to help to set-up and tear down plus during the show, we put in four (4) hours to help where is needed.

Our show chairpersons, **Cathy Miller + Sheryl Cooper**, put in countless hours to do floor plans for our gem show. Beth Farmer is the dealer chairman.

We would like to see members come to our monthly meetings. I know many of us do have jobs and busy schedules. We can at least, set one night a month aside to come to the meeting, which is the 3rd Tuesday monthly. I know some people can't drive at night, but you can call and ask someone to give you a ride to the meeting.

I like to see this club keep going. I've seen too many clubs have fold up. We are strongest and the best gem show in the northern California!!

So, please club members, this is your club, come to our general meetings.....

Sincerely yours,

**Bonnie Andrade**

Finally this one is from **Norm Hodgson**;

How about Season Tickets, box seats to the S.F. Opera or a membership to the Academy of Sciences for a year. How about memberships in Children's Fairyland for all the grandparents at the club. Basically it comes down once again to what is the common "demoninator" for membership. Maybe a cake of your choice at a local bakery. How about 40 pounds of N.Y. Steaks at Costco. A See's Candy gift certificate. Or something that doesn't

## MGSCV Petrograph - November 2013

Monthly Bulletin of the Mineral & Gem Society of Castro Valley, inc.

cost us anything but others might want it. I know let's raffle the pink slip to Mike's VW Van. No, ok then, how about lifetime membership to our club. Well, then how about one year family membership fees paid to our club. Or a year's subscription to the Petrograph (oh, we get that already). Maybe chicken dinner at **Betty's!** We want to hear from you, please respond.

Editor, **Diana Cohoon**

### COMMENTS ON WHAT'S NEW

By **Shirley Bucschke**

The movie, "The Great Gatsby", is bringing back the art deco age to jewelry design. Art deco is vertical with lots of repeated geometric patterns. which is supposed to give it a neat slick look as opposed to frills, pastels and ornamentation of the Edwardian age. A dramatic contrast in color is another earmark of the style. Much of the jewelry was set in platinum. Today they probably use white gold. The Art Deco age lasted from 1920-1930.

The Swiss equivalent of the IGA has announced a problem with some conch pearls. A coating, probably a resin, has been added to the pearls and the result has been an unstable coating which damages the pearls. First a sort of powder is noted and under magnification, it is seen the pearl is being destroyed. The condition is not reversible. The pearls examined had been kept in a safe, worn only once or twice when the owner was disturbed by what was

happening. Since they were kept in a safe, we can surmise they were valuable.

And more on pearls. No more classic Jackie Kennedy look with a strand of pearls around the neck. Instead pearls will be everywhere. They will be around the edge of a collar, they will be embroidery on blouses, skirts, sandals, and gloves. There should be lots of combinations of pearls and metallics in necklaces come spring, even on nail polish. But as Jackie Kennedy said "Pearls are always appropriate."



**MGSCV Petrograph - November 2013**  
Monthly Bulletin of the Mineral & Gem Society of Castro Valley, inc.

**Shop Schedule**

**(All shop session's members only)**

**MAP**

- Monday** 10AM to 1PM, Lapidary  
6PM to 9PM, Beginners only in lapidary
- Tuesday** 9:30AM to 12:30PM, need daytime supervisor  
6PM to 9:00 PM, Lapidary,
- Wednesday** 9AM to 12:00PM, Lapidary  
Library open 10AM to noon.  
5:30 - 8:00 PM Lapidary
- Thursday** 10:00AM to 1:00 PM, Lapidary  
7PM to 9 PM, Lapidary
- Friday** 9-1 PM Lapidary, Faceting (experienced only)
- Saturday** 9AM to 3PM, Faceting Class 9-12, Juniors,  
w/supervisor's approval, lapidary  
Library open 10AM to noon.
- Sunday** 9:30AM to 12:30PM, Lapidary

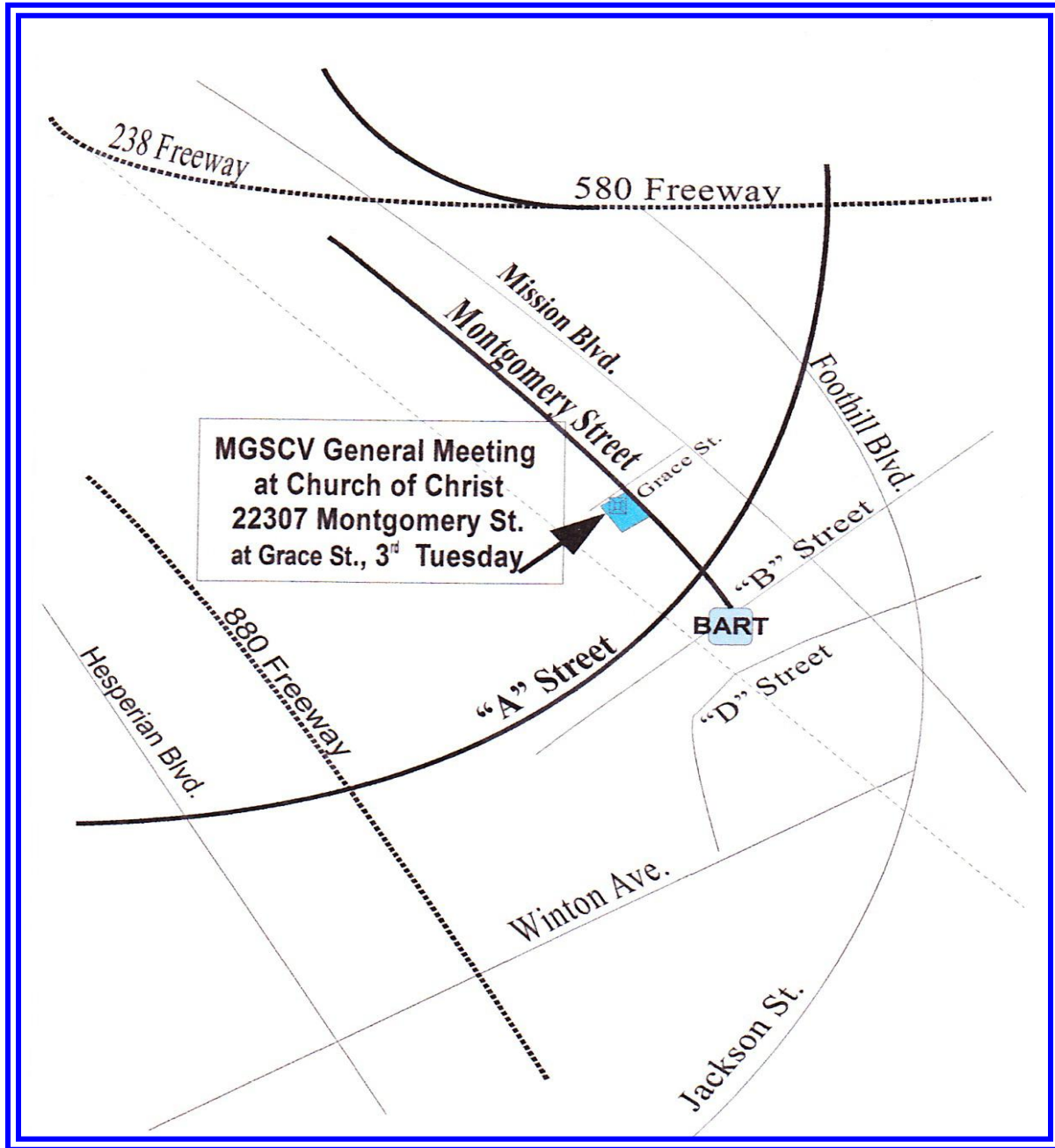


**SHOP NOTICES:**

Email us at [info@mgs](mailto:info@mgs)

**MGSCV Petrograph - November 2013**

Monthly Bulletin of the Mineral & Gem Society of Castro Valley, inc.



**From I 580: Take the A Street exit and go west, turn right on Montgomery Street and go to 22307 Montgomery Street.**

**From I 880: Take the A Street exit and go East. Turn left on Montgomery Street and go to 22307 Montgomery.**

**From Jackson Street: Go north on Mission Boulevard, turn left onto A Street, then right on Montgomery Street and go to 22307 Montgomery Street.**



# MGSCV Petrograph - November 2013

## Monthly Bulletin of the Mineral & Gem Society of Castro Valley, inc. Mineral & Gem Society of Castro Valley (MGSCV) Membership Application and Information



Membership is good for one calendar year from January 1st through December 31st. Please fill out and sign the application. Mail the completed form, a check for the dues **payable to MGSCV**, and a self-addressed, stamped envelope to - **MGSCV, Attn: Membership Chair, P.O. Box 2145, Castro Valley, CA 94546.**

Your membership is active upon receipt of your check and application. It will be processed and membership cards will be mailed to you within 4 weeks. Your email will be added to the list for the Petrograph, our newsletter. Your name will be added to the roster in the lobby at the workshop and in the drawing at the general meetings for cash prizes, if present.

We are a non-profit club whose sole purpose is the education of lapidary arts and geological sciences for all who are interested. **No products produced in the shop can be sold for profit.** All members should have or be familiar with the MGSCV Handbook. A copy is available for review in the club's lobby or one can be emailed to you by sending a request to [info@mgscv.org](mailto:info@mgscv.org).

Before any member may operate any equipment or take any class they must have completed an orientation and their first cabochon. **To schedule an orientation send an email to [WorkShopManager@mgscv.org](mailto:WorkShopManager@mgscv.org) with your name, phone number, and a good time to call you.** During the orientation you will learn about the club and get a tour of the workshop. Monday evenings are reserved for beginners only.

Membership dues cover less than 10% of our annual operating costs. It is our annual show that funds the club, workshop and all activities. **A requirement of membership is that every member must work at the show for a minimum of 4 hours.** The show is always held the first full weekend of March, so mark your calendars. The show is fun to work and is the reason we have the best workshop/club in Northern California. Shop services such as rock sawing, casting, special classes (faceting, wire wrap, metal work, etc...) will not be available to members who do not work at the show.

Membership Chairperson

Type of Membership(s): (check all that apply)       new membership       renewal membership  
 Single - \$35     Couple - \$60     Junior (11-17 with adult) - \$1     Junior (11-17 without adult) - \$5  
 Associate - \$17.50 (former member living more than 100 miles away)     Lifetime (voted in by the board)

After July 1st all new membership dues are half (½)

Name(s) (Please print all the names.)

Adults: \_\_\_\_\_

Juniors: \_\_\_\_\_

Address: \_\_\_\_\_

City: \_\_\_\_\_ State: \_\_\_\_\_ Zip: \_\_\_\_\_ Phone Number: \_\_\_\_\_

E-mail Address: \_\_\_\_\_

(Our monthly newsletter, the Petrograph, will be emailed to this address.)

Occupational Skills: \_\_\_\_\_

(Sometimes we are in need of advice and/or help in regards to electrical, plumbing, mechanical, clerical or other skills.)

Confidentiality: (check all that apply)

**I do not want** my address printed in the roster at the shop.

**I do not want** my phone number printed in the roster at the shop.

**I do not want** my email address printed in the roster at the shop. I agree with the By-laws and rules of the Mineral & Gem Society of Castro Valley (MGSCV).

Members Signatures: \_\_\_\_\_