



Club Notes



General Meeting: April 15th 2013 7:30 PM at the Church of Christ. Members with the last name that begins with I-L please bring snacks for the general meeting.

New Members: Unless otherwise stated, General Meetings are on the third with Tuesday of the month at the church at 7:30 pm. You are invited and encouraged to attend! There is a silent auction and door prizes at every meeting.

Next Board Meeting: Monday April 7th Board Meeting at the shop 7p.m.

Show Meeting: August 28th at the shop at 7PM



In This Issue:

- ❖ Club Notes
- ❖ General Information
- ❖ Meeting Minutes
 - Board Meeting
 - March 10th
 - General Meeting
 - March 18th
- ❖ Rock Rumbles
- ❖ Announcements
- ❖ Show Schedules
- ❖ Field Trips
- ❖ Gem of the month
- ❖ Bench Tips by Brad Smith
- ❖ Kids Korner
- ❖ Shop Schedule
- ❖ Map To New General Meeting Place

MGSCV Petrograph - April 2014
Monthly Bulletin of the Mineral & Gem Society of Castro Valley, inc.

This publication is the bulletin of the Mineral and Gem Society of Castro Valley, Inc., a member of the California Federation of Mineralogical Societies, Inc., the American Federation of Mineralogical Societies and the North Bay Field Trip Association.

Bulletin Submission Policy

Submission deadline is the second Friday following the *General Meeting* (normally the second Wednesday of the month.) Anonymous contributions will not be considered for publication in the Petrograph; however, if requested at the time of submission, the contributor's name can be withheld. Members are encouraged to submit articles that may be of interest to the general membership. The bulletin editor reserves the right to edit any submitted articles or omit any submission from publication. Source must be cited for material quoted from other authors. Permission to reprint Petrograph articles is hereby granted provided properly cited.

2013 MGSCV Officers

Elected

President - Bonnie Andrade	President@mgscv.org	
Vice President -	VP@mgscv.org	
Secretary - Sheryl Cooper	Secretary@mgscv.org	(510) 589-8858
Treasurer - Betty Milam	Treasurer@mgscv.org	
1 st Year Director - Norm Hodgson	Director1@mgscv.org	
2 nd Year Director -Mike Cox	Director2@mgscv.org	
3 rd Year Director - Jodi Minshall	Director3@mgscv.org	
Federation Director - Mike McBride	Federation@mgscv.org	
Shop Manager - Beth Farmer	ShopManager@mgscv.org	
2014 Show Chairman - Cathy Miller	ShowChair@mgscv.org">ShowChair@mgscv.org	
Membership - Tony Cooper	membership@mgscv.org	510-589-5292
Editor - Diana Cohoon	Editor@mgscv.org	
Past President - Ron Miller	pastpresident@mgscv.org	

Appointed

Scholarship Chair - Mary Howell	
Librarian - Mary Howell	
Historian - Jamie McDonald	
Purchasing Agent - Beth Farmer	
Education Coordinator - Shirley Buschke	
Field Trip Coordinator-	
Parliamentarian - Doc Buschke	
Reception/Hostess - Ann Vargas/Dan Gilson	
Sunshine Reporter - All members	
Door Prizes - Bonnie Andrade	
Web Master - Tony Cooper	webmaster@MGSCV.org

MGSCV Petrograph - April 2014

Monthly Bulletin of the Mineral & Gem Society of Castro Valley, inc.



Publication Staff



✧Contributors: Shirley Buschke, Jodi Minshall, Sheryl Cooper, Mike McBride

BOARD MEETING

March 10th 2013

Submitted by Sheryl Cooper

The meeting was called to order at 7:10 pm.

In attendance were **Bonnie Andrade, Cathy Miller, Diana Cohoon, Sheryl Cooper, Betty Milam, Mike McBride, Jodi Minshall, and Tony Cooper.**

Treasurer: We reviewed the February treasurer's report presented by **Betty Milam**. Of course we wanted to know how much the show brought in but the reports are not ready yet. **Sheryl Cooper** moved to accept the reports as presented. **Mike McBride** seconded the motion and it was carried unanimously.

Editor: **Diana Cohoon** needs you to send your articles to editor@mgscv.org by the last week of the month.

Minutes: **Jodi Minshall** moved to accept the February board minutes as printed in the Petrograph. **Diana Cohoon** seconded the motion and it was carried unanimously.

Membership: There are 115 current members. If you provided an envelope then they have been mailed out. Otherwise they are available at the shop near the sign in book.

Federation: The 75th annual CFMS show is May 30, 31 and June 1 in Pomona, CA. The CFMS is trying something new this year called Club Central. Societies can reserve a time to represent their club and let

everyone know who we are. There are about 40 competition categories. Talk to **Mike McBride** for information about the competitions or exhibiting at this year's show.

Unfinished Business: We are still working on the wording for the Director's duties to cover open board positions.

New Business: **Doc and Shirley Buschke** proposed some life time memberships.

Show: We did it. We got through another show and survived it. **Cathy Miller** says it was harder to pull together this show than it was three years ago when she took over the position. We need positions filled. There were a lot of things that did not get done. We will be writing down instructions for the managers in hope to get volunteers. The dealers overall said it went well. There were some complaints and compliments. 8 dealers could not make it for different reasons. We filled their tables with 11 new dealers that would all like to come back next year. The Pavilion has not provided the paperwork for the work we have paid for. This year we want to complete our records with all the paperwork for the additions to the Pavilion we paid for.

The next board meeting will be Apr. 7th. The meeting adjourned at 8:40 pm.

MGSCV Petrograph - April 2014

Monthly Bulletin of the Mineral & Gem Society of Castro Valley, inc.

GENEREAL MEETING

Submitted by **Sheryl Cooper**

March 18th, 2014

Bonnie Andrade called the meeting to order at 7:40 pm. There were 25 members and 3 guests present.

Guests: Vincent and Keith are members of a Bonsai club and want to learn more about the rocks they have been collecting. **Sonya** has grandkids as members of the club and came to see what all the excitement is about.

Minutes: Shirley Buschke moved to accept the February minutes as printed in the Petrograph. **Betty Milam** seconded the motion and it carried unanimously.

Shop: Shop cleanup will be on Saturday, April 5th and the **Open House** will be on Sunday, April 6th. **Beth Farmer** installed new 8" grinding wheels.

Show: The show is over and now we are getting ready for next year. People would like to hear more announcements throughout show regarding the live auction. There were several bumps in the road to work on for next year. **Cathy Miller** says she is still learning and making adjustments. She would like to hear suggestions from everyone. The show wrap up meeting is March 27th at the shop at 7:00pm. Everyone is welcome and encouraged to come. This show was harder to put together than past years. The new dealers felt our show was ok to ecstatic. They would all like to come back next year. The regular dealers had complaints and

compliments. Overall we had a good show and need to make adjustments to next year's show.

Editor: Diana Cohoon could use a few articles. Keep sending in your articles to editor@mgscv.org during the last week of the month.



ROCK RUMBLES

By **Shirley Buschke**

Do not forget Shop Clean-Up day Saturday, April 5, and the Workshop Open House pot luck luncheon on Sunday, April 6, 2014 10 a.m. - 3 p.m. It is the day we get to show off our outstanding shop!

The other morning **Mark Montgomery** came in to a horrible mess. Someone spilled water glass all over the counter, chair and floor. This is the stuff used to glue rocks to wood prior to cutting on the saw. Although called "water" the stuff is not soluble when it dries. Mark tried to clean it up. The chair was glued to the floor and he had a very hard time disengaging it. By the time the usual Wednesday gang arrived there still was stickiness on the chair and counter and floor. Be considerate of others, **CLEAN UP YOUR MESS** and offer to pay for the excess amount of water glass used. It is not cheap.

MGSCV Petrograph - April 2014

Monthly Bulletin of the Mineral & Gem Society of Castro Valley, inc.

And now, to a thoughtful and generous person. What a great donation!! **Horace Robertson** cleaned out his garage and found an almost new rock tumbler. He brought it to the club meeting and said it was to go to a juvenile at the meeting. And who was the lucky winner? **Oscar Langdon**. His smile lit up the room. He is one happy lad.

Kurt Schultz, the guy who works magic with jump rings, has donated a beautiful opal to be set by **Shirley Buschke**. Thanks, **Kurt**. He said he has run out of working time and wanted the club to have it.

The Federation show this year is May 30 in Pasadena. In the past we have had members enter competition, but lately no one seems interested in that aspect. Our president, **Bonnie Andrade's** dad won a "best of show" at one of the shows.

Former members **Jesus** and **Anne Ruiz** have participated and won awards in carving.

You should show up for clean-up of the shop on April 5th. Maybe we should add this requirement to the membership obligations. You use, you clean. And clean up should not be restricted to the once a year. Take the time to do your part every time you work at the shop.

A word of caution from one of our members-- If you are selling on the internet, indicate USA shipment only. Seems there are schemes afoot whereby material is sent, "gets lost" and then the recipient, of course, demands money back.

But did the article get to its destination? Probably, difficult to prove the material did or did not arrive.

Members are always welcome to offer materials for the silent auction at meetings. All proceeds go to the club. Some members have donated material at a specific price. This is welcome, too. It might be a great way to find a "Mother's Day" present at our next meeting.

What happened to the painting schedule? **Mike** and **Maggie** can't do it all.

Jim Ewing says he is getting tired. He would like to train someone to take his place in casting. He will be happy to mentor. **Jim** also teaches faceting and would like to have some time to do his own thing. **Speak up, someone.**

ANNOUNCEMENTS

BY-LAWS, ARTICLE XII - AMENDMENTS

The following amendment to the By-Laws of the Mineral and Gem Society of Castro Valley was read at the March 18, 2014 regular General Meeting; at that time, a vote was taken to consider the amendment. The vote was in the affirmative; therefore the amendment is being printed in the April 2014 issue of the Society bulletin (the Petrograph) as notification to the general membership. Any member wishing to correct or otherwise challenge the amendment may do so at the next regular General Meeting, at which time final voting on the amendment will take place.

AMENDMENT:

MGSCV Petrograph - April 2014

Monthly Bulletin of the Mineral & Gem Society of Castro Valley, inc.

Upon approval by the membership the following changes will be made to ARTICLE 8 - COMMITTEES - SECTION 1: Budget Committee:

Currently: The President shall, in November, form a Budget Committee to prepare the Society's budget for the next year. *The Budget Committee shall complete their work in time to have it published in the Society Bulletin prior to the January General meeting.* At the December Board meeting, the budget will be considered; if approved, it will be presented to the general membership at the January General Meeting by the newly installed President. The budget will become effective at the start of the Society's fiscal year.

Replaced by: The President shall, in November, form a Budget Committee to prepare the Society's budget for the next year. *The Budget Committee shall complete their work in time to email the Proposed Budget to all members of MGSCV who have email, and to mail the Proposed Budget to those members who do not yet have email prior to the January General meeting.** At the December Board meeting, the budget will be considered; if approved, it will be presented to the general membership at the January General Meeting by the newly installed President. The budget will become effective at the start of the Society's fiscal year.

**The Budget is addressed in the By-laws in two paragraphs, but they are identical. By approving one, both will be changed.

This paragraph is repeated in the section titled COMMITTEES: BUDGET COMMITTEE.



SHOW SCHEDULES

Culver City Rock & Mineral Club

Culver City, Ca Special Showing
April 7th, Mon. 7:30-9:30 P.M.
Vetrans Memorial Auditorium
4117 Overland Blvd., Multi-Purpose Room
Janice Metz 310-836-4611

janicemtz@yahoo.com

www.culvercityrocks.org/meeting.htm

Reno Gem & Mineral Society

Reno, Nv.
April 11th - 13th, Fri. 10-6pm; Sat. 10-5pm
Sun 10-3pm
Reno Town Hall

Corner of Peckham & So. Virginia St.

Theresa Langans 775-475-0842

theresalanghans@yahoo.com

<http://www.renorockhounds.com/>

Paradise Gem & Mineral Society

Paradise, Ca
April 12th -13th; Sat. 10-5pm; Sun 10-4pm
Elks Lodge 6309 Clark Rd.
Manuel Garcia 530-877-7324

MGSCV Petrograph - April 2014

Monthly Bulletin of the Mineral & Gem Society of Castro Valley, inc.

paradisegemandmineralclub@yahoo.com

<http://paradisegem.org/>

Santa Clara Valley Gem & Mineral Society

San Jose, Ca

April 12th - 13th 10-5pm daily

Santa Clara County Fairgrounds

334 Tully Rd.

Frank Mullaney 408-691-2656 cell

info@scvgms.org

www.scvgms.org/

Mariposa Gem & Mineral Society

Mariposa, Ca

April 19th - 20th 10-6pm daily

Mariposa County Fairgrounds

Fairgrounds Drive (Hwy 49 So.-1.8 Mi So.
Of Mariposa

Martin Foden 209-742-4036

martin@safarigold.com

www.camineralmuseum.com/

Canejo Gem & Mineral Club

Thousand Oaks, Ca

April 26th - 27th 10-5pm daily

Borchard Park Community Center

190 Reino Rd. (at Borchard Rd.)

Robert Sankovich 805-494-7734

rmsorca@adelphia.net

<http://www.cgamc.org/>

Santa Cruz Mineral & Gem Society

Santa Cruz, Ca

April 26th - 27th; 10-5pm daily

Santa Cruz Civic Auditorium

Church St & Center St.

Dean Welder 408-353-2675

www.scmgs.org/

Lone Pine Gem & Mineral Society

Bishop Ca.

May 2nd - 4th; Fri. 10-5pm; Sat. 9-7pm; Sun.
10-3pm

Bishop Fairgrounds

Sierra St. & Fair Dr.

Steve Mobley 760-793-6025

steve@littlebearrocks.com

Amador County Gem & Mineral Society

Jackson, Ca

May 3rd - 4th; 10-4pm daily

Kennedy Mine

12594 Kennedy Mine Rd. (off hwys 49/88)

Margaret Kolaczyk

blackwolf@volcano.net

Santa Lucia Rockhounds

Paso Robles, Ca

May 3rd - 4th; 9-5pm daily

Pioneer Park & Museum

2010 Riverside Ave

Kim Noyes 805-610-0603

kimnoyes@gmail.com

www.slrockhounds.org/



Field Trips

Lew's Rocks of the San Joaquin Lapidary Society will be hosting a field trip April 12th and 13th 2014, to BORON and KRAMER JUNCTION. This trip is limited to 50 people. Lew's Rocks hosts this trip, "DISCOVERING THE MOJAVE DESERT," twice a year, around Easter and Thanksgiving. This is open to everyone that signs a letter of release responsibility. The trip will include at least 3 different localities. Jasper, plume agate seam agate, travertine palm root, bog, petrified wood, and chalcedony are some of the materials to be found. For more information or to reserve your spot and if needed hotel accommodations as early as possible by e-mailing me at <lewsrocks@bak.rr.com>, or call (661) 323-2663.

Round Hound Field Trip Fanatics

2014 Central California Rockhound Odyssey

Time: April 12, 2014 to April 20, 2014;

Organized By: Kris W. Rowe

Location: Throughout Central California, including Clear Creek Street: Web Map coming soon!

Phone: (559) 250-5057 Event Type: field, trip



Topaz Mt., North West of Delta Utah

Courtesy Roseville Rockrollers sponser club

Open to all affiliate clubs

May 2nd through May 4th

Collection materials: topaz crystals, Red Beryl, Pseudobrookite crystals, hematite crystals.

Jim Hutchings 530-367-5108, cell: 916-995-7380

Jhutchings22@hotmail.com



Virgin Valley, Nevada

Memorial day weekend May 23- Monday May 26th

Roseville RockRollers are the sponsors

Materials are; opals, preserved petrified wood, selenite, and opalite. Apache Tears, Carnelian, and colorful Agates and Jaspers are found in the region nearby.

Jim Hutchings 530-367-5108 or cell: 916-995-7380

Jhutchings22@hotmail.com

AFMS MULTI-FEDERATION MONTANA
FIELD TRIP

MGSCV Petrograph - April 2014

Monthly Bulletin of the Mineral & Gem Society of Castro Valley, inc.

The town of Terry, Montana may be small, but they are planning on rolling out the red carpet for us as they host the AFMS 2014 Multi-Federation field trip gathering. The dates are July 31 - August 4, 2014, so mark your calendars and get ready to register! Terry is right in the middle of some of the best Montana rock hounding areas. Start planning your collecting vacation now. Kids are welcome! For more information, visit URL: <<http://www.amfed.org>>, or contact Doug True, Fieldtrip Chair, (406) 670-0506, email: <dtruefossils12@yahoo.com>.



GEM OF THE MONTH

Submitted by Shirley Buschke

Our gem's father was in the Navy and our gem was born at Oak Knoll Hospital in Oakland. Our gem grew up in Napa and graduated from Sonoma State College and attended many classes at UC Berkeley. There is a younger brother in the family. As a kid our gem attended a fluorescent exhibit at the Napa Fair grounds and that's where the interest in rocks began. In high school time was spent near the mercury mines by Lake Berryessa so more interest in rocks.. Our gem's dad became harbor master in Spanish Heights and our gem had a horrendous trip to high school, One and one half hours to school. Only one student

had to go a little farther. And we complain about commuting!

Our gem's work background is interesting, with a major in biology, and not wanting to teach, eventually ended up at Standard Oil and became very active in mechanical activities. Dad had told her when she bought a jalopy that if that was the choice , "Learn how to take care of it". (Thank you dad, for teaching her how to be a mechanic.) The shop has sure profited from that. If we tell you she has a Metro you know our gem.

Our gem joined MGSCV in August of 1997 and not long after joining became club secretary. Time to give a bigger hint. She continued as secretary until 2004 when she became shop chairman. She still holds that job. She is responsible for maintenance of the shop, purchasing materials to keep the shop and Doc's shop going. She is constantly looking for help in maintenance and fortunately we do have a couple dependable helpers but can use more. She has worked at all the shows, being food chairman until lately. Our membership has shrunk so fewer helpers and therefore fewer workers so we have gone to food trucks at the show. This year she was dealer chair. And soon she will be directing shop clean up .

Our gem also loves orchids and traveling. I don't think there are many place in the world she has not visited. Sacãche even drove that Metro to a convention in the east. Of course you know our gem by now. Beth Farmer.

MGSCV Petrograph - April 2014

Monthly Bulletin of the Mineral & Gem Society of Castro Valley, inc.

BRAD SMITH BENCH TIPS

POLISHING WHEELS

In the finishing sequence there's a step called pre-polishing, between sanding and buffing, and one of the most effective tools I've found to help here is the little silicone wheels used in a Foredom or Dremel. They come in several different abrasive levels and several different shapes. The wheels are color coded to denote their abrasive level. Different shapes (coin, knife, cylinder, point, etc) are available to match the geometry of the area being cleaned up.

For a starter, I'd suggest a medium, a fine and an extra fine wheel in both the coin shape and the knife-edge shape. The thicker coin shapes are particularly handy. Be sure to get a few extra mandrels so you'll have one of each wheel shape mounted and ready to go.

Cylinder shapes are nice for doing the inside of rings. Knife-edge shapes clean up the base of bezels quickly. Most jewelry catalogs carry these wheels, but often the color codes don't match between different manufacturers.

RESHAPING SILICONE WHEELS

Silicone polishing wheels in the Dremel or Foredom are a great time saver, but after using them a bit they often need to be reshaped. This is particularly true with the knife-edge wheels.

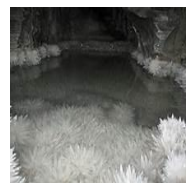
The natural thought is to grab one of your files and hold it up against the

rotating wheel to reshape it. But this gives you a problem. The grinding grit in the silicone wheel is much harder than steel, meaning that you end up grinding down the teeth of your file.

The best way to reshape your polishing wheels is to use a diamond file. If you don't have one and must use a steel file, I sacrifice the area of the file that is closest to the handle. That's an area which is not used in normal benchwork.

Get all 101 of Brad's bench tips in "Bench Tips for Jewelry Making" on Amazon

<http://amazon.com/dp/0988285800/>



KIDS KORNER

By Elizabeth Bennette 15 yrs. Old

Within the depths of the most productive lead mining facility of Naica, Mexico, lies a stunning geological occurrence: a crystal cave of monstrous proportions. Almost other-worldly, Earth's largest crystal gypsum collections take form within this football field sized cave. The cave itself is large, and it has to be in order to accommodate the minerals within.

Stalagmites and stalactites 30 feet long, and several feet thick protrude from the walls at varying angles, creating a pick-up-stick-esque maze of gypsum crystals for explorers to journey through. The

MGSCV Petrograph - April 2014

Monthly Bulletin of the Mineral & Gem Society of Castro Valley, inc.

strangeness of the cave proposed many new puzzling questions for scientists after the discovery of the cave in 2000. How were the giants created? How old are they? Why gypsum? And finally, what has been done to preserve them? In order to answer these questions, renowned chemists and geologists journey to the caves in search for clues of its past. Because of the cave's extreme temperatures and incredibly high humidity, explorers undertake extensive precautions before entering the caves to collect samples of the crystals. Before entering, they garb themselves in three layers of clothing. The first is lined with ice packs, the second insulates the coldness, while the third is a bright orange jacket that allows for easy identification and connection to a respirator that feeds cool air to the wearer. Even with these measures, explorers are only allowed in the cave for 20 minutes to avoid overheating. Still, 20 minutes is enough time for the geologists to collect small samples of the gypsum which are used to discover more about the past. Writhing the gypsum, trapped bubbles, living microbes, and uranium samples help uncover the age and history of the cave.

Before the crystals existed within the cave, calcium and sulfate saturated water filled it. Calcium sulfate, elements necessary to creating gypsum, stayed at their molecular, dissolved form as long as the hot magma ran underneath the cave. As the magma and water cooled, the calcium sulfate solidified at a constant rate for thousands of years. The crystals only

stopped growing a few decades ago when miners drained the area, inadvertently halting the growth of the giants. Activists and geologists are now working to designate the cave as a national geological preserve, in order to protect the cave from current and prospective miners looking to exploit the crystals. With 1-2 inch samples selling online at \$850, it's no wonder so many people are anxious to obtain the gypsum. Nonetheless, the crystals are appreciated by many, even from outside of the cave, with some stunning specimens even featured in the Smithsonian.

The unexpected and stunning collection of gypsum found within the crystal caves display the strange workings of the nature and show how these occurrences can result in the most impressive geological feats. As appreciative members of Mineral and Gem Society, we already understand the beauty that can come from something as common as cooling and heating magma within the crust of the Earth. However, magnificent finds, such as the crystal caves of Naica, draw more attention to the world of minerals and gems, and serve as another example of naturally occurring geological beauty.



MGSCV Petrograph - April 2014
Monthly Bulletin of the Mineral & Gem Society of Castro Valley, inc.

Shop Schedule

(All shop session's members only)

MAP

- Monday** 10AM to 1PM, Lapidary
6PM to 9PM, Beginners only in lapidary
- Tuesday** 9:30AM to 12:30PM, need daytime supervisor
6PM to 9:00 PM, Lapidary,
- Wednesday** 9AM to 12:00PM, Lapidary
Library open 10AM to noon.
5:30 - 8:00 PM Lapidary
- Thursday** 10:00AM to 1:00 PM, Lapidary
7PM to 9 PM, Lapidary
- Friday** 9-1 PM Lapidary, Faceting (experienced only)
- Saturday** 9AM to 3PM, Faceting Class 9-12, Juniors,
w/supervisor's approval, lapidary
Library open 10AM to noon.
- Sunday** 9:30AM to 12:30PM, Lapidary

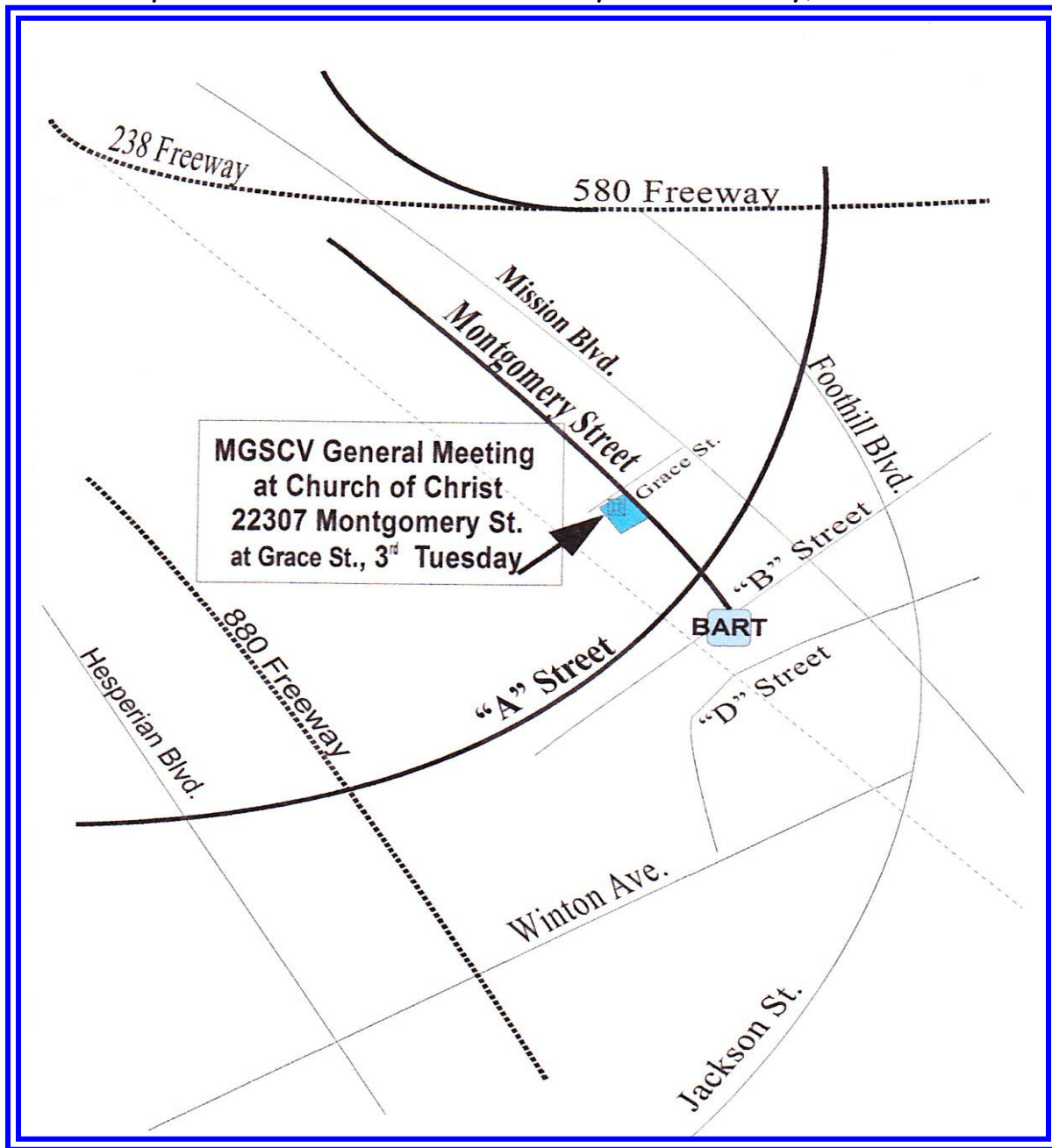


SHOP NOTICES:

Email us at info@mgs

MGSCV Petrograph - April 2014

Monthly Bulletin of the Mineral & Gem Society of Castro Valley, inc.



From I 580: Take the A Street exit and go west, turn right on Montgomery Street and go to 22307 Montgomery Street.

From I 880: Take the A Street exit and go East. Turn left on Montgomery Street and go to 22307 Montgomery.

From Jackson Street: Go north on Mission Boulevard, turn left onto A Street, then right on Montgomery Street and go to 22307 Montgomery Street.

MGSCV Petrograph - April 2014

Monthly Bulletin of the Mineral & Gem Society of Castro Valley, inc. Mineral & Gem Society of Castro Valley (MGSCV) Membership Application and Information



Membership is good for one calendar year from January 1st through December 31st. Please fill out and sign the application. Mail the completed form, a check for the dues **payable to MGSCV**, and a self-addressed, stamped envelope to - **MGSCV, Attn: Membership Chair, P.O. Box 2145, Castro Valley, CA 94546.**

Your membership is active upon receipt of your check and application. It will be processed and membership cards will be mailed to you within 4 weeks. Your email will be added to the list for the Petrograph, our newsletter. Your name will be added to the roster in the lobby at the workshop and in the drawing at the general meetings for cash prizes, if present.

We are a non-profit club whose sole purpose is the education of lapidary arts and geological sciences for all who are interested. **No products produced in the shop can be sold for profit.** All members should have or be familiar with the MGSCV Handbook. A copy is available for review in the club's lobby or one can be emailed to you by sending a request to info@mgscv.org.

Before any member may operate any equipment or take any class they must have completed an orientation and their first cabochon. **To schedule an orientation send an email to WorkShopManager@mgscv.org with your name, phone number, and a good time to call you.** During the orientation you will learn about the club and get a tour of the workshop. Monday evenings are reserved for beginners only.

Membership dues cover less than 10% of our annual operating costs. It is our annual show that funds the club, workshop and all activities. **A requirement of membership is that every member must work at the show for a minimum of 4 hours.** The show is always held the first full weekend of March, so mark your calendars. The show is fun to work and is the reason we have the best workshop/club in Northern California. Shop services such as rock sawing, casting, special classes (faceting, wire wrap, metal work, etc...) will not be available to members who do not work at the show.

Membership Chairperson

Type of Membership(s): (check all that apply) new membership renewal membership
 Single - \$35 Couple - \$60 Junior (11-17 with adult) - \$1 Junior (11-17 without adult) - \$5
 Associate - \$17.50 (former member living more than 100 miles away) Lifetime (voted in by the board)

After July 1st all new membership dues are half (½)

Name(s) (Please print all the names.)

Adults: _____

Juniors: _____

Address: _____

City: _____ State: _____ Zip: _____ Phone Number: _____

E-mail Address: _____

(Our monthly newsletter, the Petrograph, will be emailed to this address.)

Occupational Skills: _____

(Sometimes we are in need of advice and/or help in regards to electrical, plumbing, mechanical, clerical or other skills.)

Confidentiality: (check all that apply)

I do not want my address printed in the roster at the shop.

I do not want my phone number printed in the roster at the shop.

I do not want my email address printed in the roster at the shop. I agree with the By-laws and rules of the Mineral & Gem Society of Castro Valley (MGSCV).

Members Signatures: _____