



Monthly Bulletin of the Mineral & Gem Society of Castro Valley

April 2009

General Meeting:

April 8th, 7:30 P.M. at Mt. Eden Presbyterian Church, 26236 Adrian Ave, Hayward (Next to Chabot College, behind Burger King). See map on back cover.

Program:

To be announced

April Refreshments: A - H

New Members: Unless otherwise stated, General Meetings are on the second Wednesday of the month at the church at 7:30pm. You are invited and encouraged to attend! There is a silent action and door prizes at every meeting.

Next Board Meeting:

April 6th, 7:00 p.m. at the shop.

Shop Cleanup and Open House and Potluck:

The Shop Clean-Up is on Saturday, April 18, 2009, at 9:00 AM (lunch will be served)

The Open House & Pot Luck will be on Sunday, April 19, 2009, at 10:00 AM.

There will also be rough rock for sale.

For the Pot Luck if your last name starts with:

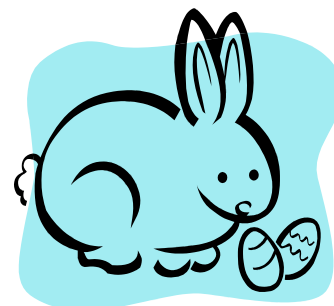
A - F: Bring a Hot Dish

G - P: Bring a Salad

Q - Z: Bring Dessert

In This Issue:

- ❖ March Board Meeting Minutes
- ❖ March General Meeting Minutes
- ❖ Show Committee Meeting Report
- ❖ Rock Rumbles
- ❖ Kitchen Thank You
- ❖ Trip Report, Part 1
- ❖ CFMS Show 2009
- ❖ Upcoming Events/Shows



MINERAL AND GEM SOCIETY OF CASTRO VALLEY, INC. PETROGRAPH

This is the bulletin of the Mineral and Gem Society of Castro Valley, Inc., a member of the California Federation of Mineralogical Societies, Inc., the American Federation of Mineralogical Societies and the North Bay Field Trip Association.

Bulletin Policy

Submission deadline is the second Friday following the *General Meeting* (normally the second Wednesday of the month.) Anonymous contributions will not be considered for publication in the *Petrograph*; however, if requested, the contributor's name will be withheld from the published material. Members are encouraged to submit articles of various types that may be of interest to the general membership. The editor reserves the right to omit submissions from publication. Proper credit must be cited for material from any other source. Permission to reprint *Petrograph* articles is hereby granted provided all credit is given.

Publication Staff

Typists: Mike Tice, Shirley Buschke, ✧ *Rock Rumbles*: Shirley Buschke ✧ *Labels, Assembly and Mailing*:
Eloise Murata-Rudiger & Candy Jones

March Board Meeting

The meeting was called to order at 7:10 pm, by President Ron Miller. In attendance were Ron Miller, Jim Ewing, Sheryl Cooper, Mary Jane Holmes, Larry Ham, Bonnie Andrade, and Jane Panico.

February Board Meeting Minutes:

Jane Panico moved to accept the February minutes as printed in the Petrograph. Larry Ham seconded the motion, it was unanimously carried.

Treasurer's Report: Betty Milam

Betty could not attend the meeting but gave the treasurer's report to Ron Miller. Jane Panico moved to accept the treasurer's report as presented. Larry Ham seconded the motion, it was unanimously carried.

Shop Manager: Beth Farmer

She was not present, but Larry reported that most of the show items were put back into place at the shop. There are just a few things to be moved around. We are working on rebuilding the 18" saw.

Show Chairman: Larry Ham

Larry reported that some of the dealers were impressed with our juniors. They could identify most of the stones without being told what they were. We are considered the best club in California. Larry would like to remind everybody just how unique our club is. We offer several classes on a variety of subjects, have an ongoing junior program, our shop is open for use most days of the week, and we have an active membership ranging from juniors to old-timers. The show went well this year. Some dealers reported their sales were down about 10-20%, while others said it was the best show they ever had. Thank you for all your help in covering the various positions before, during, and after the show. We do need more people Monday mornings unloading the truck at Centennial Hall and unloading the truck at the shop. Look for a more complete recap next month. Mary Jane suggested we put the show program up on the website and everyone agreed.

Editor: Mike Tice

He was not present.

Librarian: Mary Howell

She was not present

Membership: Bonnie Andrade

We currently have 187 members in good standing. This number includes life time and junior members.

Junior Mentor: Mark Montgomery

He was not present, but Larry reported a new junior will be starting soon.

Field Trip Coordinator: Ron Hasemeyer

He was not present.

Scholarship: Mary Howell

She was not present.

Shop Steering: Larry Ham

He has nothing to report.

Education: Shirley Buschke

She was not present.

Unfinished Business:

A reminder the Science Fair at Palomares Elementary in Castro Valley will be on Friday, May 8th. Several items are taken that the kids can touch and feel.

New Business:

Our Open House will be Sunday, April 19, so the shop will be closed for cleanup on April 18.

The USGS Open House is also in April.

There is a junior looking for a metal smithing class.

Castro Valley High School is holding a Science Show the weekend on May 2 & 3. They have seen us at the Science Fair at Palomares. The members who do Palomares cannot do both events.

We have received a donation of agates and fluorescent minerals belonging to Harry Wayne, a founder of Raytec. Mark Isaacs picked up approximately ¾ of the original collection. Some items were on display at the show. The collection in its entirety will remain the property of MGSCV currently in the possession of Mark Isaacs. Mark will be asked to catalog and appraise the collection for us.

Past President Del Ray Johnson (80-81) donated his presidential vest to the club.

Richard Owens has some of Ben Owens cabochons and trophies; he is willing to donate to the club. We felt he should display them as a memorial to his dad at the next show.

The next Board meeting will be Monday, April 6, 2009 at 7:00 pm. The meeting was adjourned at 8:30 pm. *Submitted by Sheryl Cooper*

What the heck is CFMS?

The California Federation of Mineralogical Societies (CFMS) was organized in 1936 to bring about a closer association of Clubs and Societies devoted to the study of Earth Sciences and the practice of Lapidary Arts and Crafts in the Western part of the United States.

The CFMS includes approximately 137 clubs and societies mostly in California. There are a few clubs outside this area in Arizona and Nevada due to historical affiliation. The CFMS is a member of the American Federation of Mineralogical Societies (AFMS).

March General Membership Meeting

The meeting was called to order at 7:30 pm, by President Ron Miller. We had no guests at this meeting. The meeting was attended by 19 members.

February Meeting Minutes:

Mark Montgomery moved to accept the February minutes as printed in the Petrograph. Karl Churchill seconded the motion, it was unanimously carried.

Program Chairman: Karl Churchill

Presentation was "Copper Canyon Trip by Karl & Niki Churchill." Copper Canyon is in the state of Chihuahua, in Mexico. It is also called the Grand Canyon of Mexico. It is actually about 20 different canyons, instead of one long canyon. Karl and Niki took a cruise to Mexico and then a train ride to the canyon in December 2008. The train ride was 5 ½ hours long each way through the Sierra Madre Mountains. They traveled 200 miles, across 14 bridges and through 87 tunnels, to go from sea level to 7800 feet. The Tarahumara Indians live in the area, along with a Mennonite community. Karl and Niki shared several pictures, mini movies, and stories with us about their excursion. The Grand Canyon in Arizona was formed by the Colorado River; while Copper Canyon was formed by volcanic activity. Copper Canyon got its name from the color of the canyon.

Shop Manager: Beth Farmer

Beth has replaced 2 of the 80 grit wheels in the shop. She is considering changing the layout of the genie machines by moving the grinders to one side and the sanders on the other side. Similar to how the machines are by the sink. She is asking how you feel about this and if you have any suggestions.

Show Chairman: Larry Ham

He was not present; the show wrap up meeting is next week. We will get a report next month on how everything went. Ron Miller reported the dealers were happy. He asked if anyone had a guess as to what the turn over rate was for the dealers since 2000. There were guesses of 10, 15, 20%. We had 44 dealers in 2000 and 22 of them have changed.

Editor: Mike Tice

He was not present.

Membership: Bonnie Andrade

We have 199 members in good standing. (Yes, 12 applications were processed since Monday night) In February we got 9 new members, 4 of them juniors. In March we got 16 new members, 1 is a junior. We were informed that some of the new members are actually returning members.

Librarian: Mary Howell

Mary told us she got several books on geology and that she is still cataloging them. She will have a list for us next month.

Junior Mentor: Mark Montgomery

Mark has not seen the new juniors yet, but is ready for them.

Field Trip Coordinator/Federation: Ron Hasemeyer

He was not present. Information on upcoming shows and field trips are posted in the binder by the shop door. Bonnie Andrade announced that the Federation Show still needs exhibitors. There will be some forms and discount cards at the shop.

Scholarship: Mary Howell

She has nothing to report until next year.

Shop Steering: Larry Ham

He was not present.

Education: Shirley Buschke

Now that the show is over the classes are resuming. Sign up sheets for all classes are posted on the faceting room door. Please remember you need to contact the instructor for availability.

Unfinished Business:

Nothing for now.

New Business:

Del Ray Johnson is donating his presidential vest to the club. He was the president from 80-81. Bonnie Andrade will hold onto the vest for now. There is a complete list of past presidents posted on the wall at the top of the stairs.

Announcements:

USGS is having their Open House on May 16th & 17th, from 10:00 – 4:00 in Menlo Park. You can get more details at their website: <http://openhouse.wr.usgs.gov> The website says it is the ninth triennial open house.

Drawing Winners:

Membership Drawing: Dona Pedvin She was not present, so we try again next month.

Guest Tickets: no guests this month

Members Tickets: John Christian, Ron Miller, Sheryl Cooper, Mark Montgomery, Doc Buschke, Bill West, John Gordon, Karl Churchill, Beth Farmer, and Mary Howell. Congratulations to the March winners. The next General meeting will be Wednesday, April 8, 2009 at 7:30 pm

The meeting was adjourned at 9:00 pm.

Submitted by Sheryl Cooper

Show Committee Meeting Report

While this is not an "official report" from the Show Chairman or the Secretary, the meeting was such a positive one that I had to provide a recap for the membership.

In attendance were Larry Ham, Jane Panico, Ron Miller, Mike Tice, Betty Milam, Cathy Miller, Louise Rudiger, Tony Waiss, Anne and Dan Gilson, Sheryl Cooper and Mark Montgomery.

Betty Milam reported that the show cleared almost \$24,000. This number was up slightly from previous years. The money handling for the various income centers was smoother and the admissions totals showed that 2348 persons paid to attend the show.

Larry Ham reported that about 650 students came through the show. He felt that the Spinning Wheel functioned much smoother this year and Louise agreed that the addition of ropes and money aprons simplified the job.

Dealer Chairman Ron Miller reported that overall the dealers were very happy, even in these tough times. Several dealers reported that this is the best show outside of Tucson for them. Larry confirmed that the dealers report that this is the best club show that they do. Because we take care of the dealers and have such good relationships with them, there is always a waiting list to get into our show.

Lessons learned included guidelines for breaking down the display cases and the establishment of an emergency protocol.

The big issue is, of course, where the show will be held next year. Centennial Hall is being torn down, and your show committee is working hard to find a new spot. Lots of discussion has been held with Newark Pavilion, and several members have visited the site. Jane Panico will be going out again on Tuesday and Betty Milam is working the contract issues. We are all hoping for a satisfactory end to this search, and wherever we land, one thing is for sure: We will need the help of everyone next year to make the show in the new venue a success. We were at Centennial Hall for many years and were set up for it. This won't be the case at the new spot and we are certain to face many challenges, which will be overcome as we draw upon the many skills that our diverse membership offers.

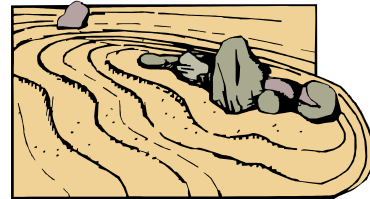
Larry closed by thanking all for their support and reiterating how smooth and successful the show was.

On behalf of our entire membership, I'll close by thanking Larry Ham for his tireless efforts as Show Chairman. Once again he has managed the effort required to put on one of the best club shows in the state and bring in the revenue that keeps our outstanding shop going.

"Thanks, Larry!"

Rock Rumbles

—Shirley Buschke
April 2009



SNYDER'S RANCH

So you couldn't make it to Tucson or Quartzite-- consider a visit to Snyder's Ranch in the Sierras. It's a mini Quartzite; a rock show on a ranch. Check out the weather before going so you are prepared. We have been there in heat and rain. One year cars had to be towed out of the parking lot which is pasture land because they were stuck in the mud. Snyder's Ranch is in Valley Springs and once you get there signs will direct you. Save money and room for the delicious pies a church group sells. The usual hot dogs and hamburgers are also available, but those homemade pies--mmmm.

Kitchen Thank You from Beth Farmer

I was worried about how the kitchen would function this year with the small number of volunteers that signed up. What did happen is that those that did come to work in the non glamorous kitchen were hard workers. Our club is lucky to have members such as these people that we can depend on! Here is a list of members who signed in and prepared 2009 food: Lily Johnson, Jon Karimzad, Paul Kenny, (John?- sorry, got erased) Christian, Judy Mulleague, and Ron Gworek. I hope that I didn't leave anyone out, and I hope that you all had a little fun.



Trip Report – Mojave to Nevada, Part 1

By Mike Tice

I never put much stock in the "Friday the 13th" thing so it hadn't even entered my mind until I sat at the gas pump in my bus Madeline, recording the mileage and time at the beginning of my recent road trip. Here I was, beginning a week-long trip to Nevada, traveling mostly dirt roads, in the middle of March, in a 33 year old VW bus with over 300,000 miles on it. And I was starting on Friday the 13th.

Trip Report (Continued)

"Better get some good mojo going here", I thought, as I pulled on to Mission Boulevard, heading for 680. I popped in the faceplate to my stereo and waited for the first song to come up on the Sirius Radio. There is one thing I do put stock in; whatever the first song is that comes on as I start a road trip tends to be a harbinger of what's to come. I was delighted to catch the very beginning of "Southern Cross" by Crosby, Stills and Nash. It was a great start as we chugged up the hill and on toward 580 and the Altamont, "nicely making way".

I felt little remorse for the hordes of commuters from the valley heading west on 580 as I crossed the Altamont and headed south on Interstate 5. I hadn't had a vacation day since last June and after an aggravating Bathroom and then Kitchen/Laundry remodel, I was ready to go. Traffic was light all the way to 58 and over the Tehachapi's to Barstow. Also light was the wind, my number one enemy. The forecast was for warming temps and dry roads. I had been monitoring a few ranch weather stations through Weather Underground and knew that there had been virtually no rain on the valley floors in central Nevada in months, so mud wasn't a concern. As I explained to a miner later that week when he asked about Madeline, "She'll climb a tree, but she wallows in the mud".

Afton Canyon has been a popular collecting spot since the 30's and is easily accessible in a passenger car. About 38 miles past Barstow on Interstate 15, take the Afton Rd. exit. The campground is 3.5 miles from the highway on a slightly washboarded road. There were only two other campsites occupied, which was fine by me. It's a gorgeous canyon, along which the Mojave River makes its rare (perhaps only) above ground appearance. Lots of small trees, willows, birds, and frogs. The Union Pacific main East/West line runs through the canyon and the trestle is not 200 yards from the campground; sitting near the trestle as the big freight trains went by was a popular diversion for some. After a gorgeous night and my first campfire in months (old kitchen cabinets burn very well, by the way) I devoted the next day to collecting and exploring.

Saturday I collected in Pyramid canyon, directly across from the campground, under the trestle and across the river. Following the canyon up the main branch, I kept bearing to the left at forks until I ascended to the top of the canyon plateau. It was a spectacular view of the Cady Mountains to the south and the far-off Granite and Avawatz Mountains to the north, separating Fort Irwin from Death Valley. Besides two friendly ravens, I found the top of the plateau covered with dark red jasper.

I had heard from another camper that Garnets were to be found high in the canyon, but saw no evidence of them. As the canyon walls are constantly eroding, it seems this is a spot that will never get cleaned out. I tried to get a sample of everything; agate, jasper, jaspagate, quartz and chalcedony, and look forward to doing some cutting at the shop this next week. I even found a piece of quartz crystal that has enough clear in it to facet, this should be fun. Since this was only a stop-over spot, I didn't stay long enough to fully appreciate this location. This spot is worth a much longer stay, but do it in the spring or fall, as it gets mighty hot out here in the summer.

Sunday morning I resumed the trip, stopping in Baker to fill up, and I admit, finally eat a Gyro at the "Mad Greek". I was sick of hearing about this place and seeing the annoying road signs and had to find out for myself. Not bad at all, but don't drive all the way to Baker for it. Hwy. 127 runs north from Baker and is the southern entrance into Death Valley. My route would take me around the east side of the valley, through Tecopa and Shoshone and on to Nevada Highway 95.

I love hot springs and had read about the hot springs at Tecopa. If time permitted, I would have taken a dip. As it turned out the hot springs are public and after watching a few seasoned travelers heading into the "nudity required for sanitation reasons" mens area, I lost the stomach for it and headed on my way. The run up Hwy. 127 is not as classic as the road through the valley, but it has its own appeal in other ways. Eagle Mountain is a striking obstacle that the road must circumvent and I saw several parked cars, which I assume belonged to rockhounds. I'd love to know what they were after.

Turning left onto Hwy. 95 at Amargosa Junction, I filled up in Beatty and was surprised at how small it was. Don't wait for a Shell Station on the edge of town, there won't be one. As always, the blight of the Nevada mining towns (they're all mining towns) was sobering. I wish I could have come through Goldfield and Tonopah in the 1930's, when this state was hopping. Tonopah was the last of civilization for a while, and the only gas for the next 168 miles, because my road led east on Highway 6.

Nevada Highway 50 has gained fame as "The Loneliest Road in America", and at times seems a bit sparse. But I'm here to tell you that Highway 6 from Tonopah to Ely makes 50 look like 880 at 5 p.m. Breathtakingly beautiful with high desert valleys and 6000 foot passes, one after another

Trip Report (Continued)

The abandoned resort/café of Warm Springs is about 40 miles east of Tonopah at the intersection of Highway 375, the "Extraterrestrial Highway".

We pulled up alongside the fenced off pool and I hopped out for a much needed break. It had been 6 hours and 290 miles since my last Gyro in Baker and I was ready for a dip. The only sound was the rustle of the wind and the tinkle of the hot water as it ran off the hill behind the pool, down a travertine ditch and through a pvc pipe into the pool. The Warm Springs pool is a real swimming pool, about 12 x 30 and maybe 3 feet deep and accessible through a nice large hole in the fence. There are changing rooms for men and women, still quite usable. The water temperature was not blazing hot, either coming out of the inlet or in the pool, but it was a terrific soak. No cars went by during the 20 minutes I was there, and I air-dried as I surveyed the stone corrals and boarded up café, imagining what it was like 30 years ago. The next time you're in the neighborhood, don't miss this rest stop.

Another 50 miles east and I came to the turn off to the Lunar Crater, my stop for the night. The road from the highway to the crater is good yet washboarded, and designated as a "Scenic Byway", which means it is maintained by the state and suitable for passenger cars, which it is. The road leads right to the crater, and we stopped just short of the rim. Lunar Crater is a "National Natural Landmark" and I'll defer to the Wikipedia description of the area to describe it:

"The Lunar Crater volcanic field, an apparent middle to late Pliocene and Pleistocene continuation of the Reveille Range volcanic field immediately to the southwest, is superposed across the 25-million-year-old Lunar Lake caldera, a crudely circular topographic basin on the crest of the Pancake Range.

The field contains approximately 95 late Pliocene and Pleistocene vents and at least 35 associated lava flows contained within a northeast-trending zone, up to 10 kilometers wide and approximately 40 kilometers long, that extends obliquely across the flanks and crest of the range. Vents include cinder cones, elongate fissures, and at least two maars. Lunar Crater, a nearly circular maar, approximately 130 meters deep and 1,050 meters wide, is the most distinctive feature of the field.

A second maar, approximately 550 meters wide and 65 meters deep, occurs at the south end of a northeast-trending chain of coalesced cinder cones. Several other northeast-trending alignments of closely spaced and coalesced cinder cones characterize the field. Lava flows range up to 1.9 kilometers wide and 6.1 kilometers long with thicknesses from less than 3 meters to as much as 25 meters.

Progressive degradation of the cones and flows is very similar to that displayed by other basaltic volcanic fields in the southwest Basin and Range (including the Cima, Crater Flat, and Coso fields). Many of the flows in the northeast and central parts of the field are veneered with varying thicknesses of air-fall tephra. In other areas, all but the youngest flows are mantled with extensive deposits of aeolian silt and fine sand.

The Lunar Crater volcanic field is in the central Great Basin, approximately 105 kilometers east-northeast of Tonopah, Nevada, and 140 kilometers southwest of Ely, Nevada. U.S. Highway 6 runs through the center of the Lunar Crater field."

The Lunar Crater was spectacular, a huge hole that created its own wind. When 20 feet away it was almost still, but I had to hold on to my hat when I stood at the edge. In the distance was Easy Chair Crater, another collapsed cinder cone and great photo opportunity. There wasn't a soul around, and it turned out to be a beautiful night. Much quieter than Afton Canyon and less light interference when stargazing. I did see one military flare in the sky, far off towards Nellis AFB and Area 51, not an uncommon occurrence.

Next month - Petroglyphs, Mustangs and more.

CFMS SHOW 2009:

Seeking Your Participation! By June Harris (from the CFMS Bulletin)

The Santa Clara Valley Gem & Mineral Society is hosting the 2009 CFMS Annual Show & Convention, April 17-19, 2009, at the Santa Clara County Fairgrounds, 344 Tully Road, San Jose. We are requesting support from all our sister CFMS clubs. Please pass along this request along to your membership. Here are areas where we need your help:

CFMS Show 2009 (Continued)

Demonstrators: If your club has someone with great skills in a particular lapidary art, we would love for them to demonstrate it at the show. Check the CFMS web site for the entry form for demonstrators. Complimentary day passes are given for each day the demonstrator demonstrates for a minimum of four hours. Please return the form ASAP so that we can complete our floor layout and master schedule as soon as possible.

Exhibitors: Competitive display cases and individual items, and non-competitive display cases are requested. If anyone in your organization has a spectacular display case, ask them to enter it. Someone has incredible lapidary skills or an incredible collection of minerals or fossils, ask them to enter. Complimentary day passes for all exhibitors! If you are entering in the competitive arena, you will want to make sure you attend the banquet on Saturday night to collect any awards or trophies you have won. Look for the Advance Registration Form on the web site to reserve your banquet tickets.

Advance Registration: If you are planning to attend the show, purchase your tickets in advance by using our Advance Registration Form. Support the CFMS with your ticket purchases. Single day tickets are \$6.00 and 3-day passes are \$12.00. Editors won't want to miss the Editor's Breakfast. Also, any of your members who were entered in the article competition will want to attend the Sunday morning breakfast, as well. Their awards will be waiting for them at this breakfast. The Saturday night Awards Banquet tickets are available as well on this form. Please be sure to make your check out to "Nature's Showcase."

Working at the show: If you would like to lend your support by working a booth or station during the CFMS show, please visit the hospitality booth in the Expo Hall and volunteer your services. There will be a master list of open positions. There are always positions available with security. Your help will provide an invaluable service to the CFMS and the SCVGMS. Please be generous with your time and energy.

We thank you in advance for your generous support of the 2009 CFMS Show. Remember, your support is critical to the success of the show, The CFMS forms and info are available on our club web site, www.scvgms.org, and the CFMS web site, www.cfmsinc.org, as well as attached to this email. Return your forms right away; deadlines are approaching! We look forward to meeting representatives from each and every CFMS club at the show. See you at the show!

April 4-5: Mariposa, CA

Mariposa Gem & Mineral Club
Mariposa County Fairgrounds
Highway 49 (S. of Historic Mariposa)
Hours: Sat. 10-6; Sun. 10-4
Diane Vereschagin
Email: mineralmuseum@sti.net
Web: www.thematrixmariposagemmineralclub.info/vents.html

April 11-12 2009, Paradise, CA

Paradise Gem & Mineral club
Paradise Elks Lodge, 6309 Clark Road
Hours: Sat. 10-5; Sun. 10-4
Carol Eggleston (530) 343-0894;
Cell (530) 321-6941 Email: cjegy@chico.com
Website: www.goldnuggetwebs.com/PGMC

April 17, 18, 19, 2009, San Jose, CA

54th Annual CFMS Show, Nature's Showcase
Hosted by the Santa Clara Valley Gem & Mineral Society. Santa Clara County Fairgrounds
334 Tully Road Hours: 10-5 Daily
Detailed Show Page: [Click Here](#)
Email: info@scvgms.org
Website: www.scvgms.org

April 18 - 19 2009, Lancaster, CA

Antelope Valley Gem & Mineral club
Lancaster High School
44701-32nd St. West
Hours: 9-5 daily
Vivian Watts (760) 373-1309
Email: vivea22@yahoo.com
Website: www.geocities.com.av.gem

April 25 - 26 2009, Santa Cruz, CA

Santa Cruz Mineral & Gem Society
Santa Cruz Civic Auditorium
Corner of Center St. & Church
Hours: 10-5 daily
Don Welder (408) 353-2675
Email: wdeanweder@yahoo.com
Website: www.scmgs.org/newsite/shows/index.html

May 1-3 2009, Bishop, CA

Lone Pine Gem & Mineral Society
Tri County Fairgrounds Bishop
Corner of Sierra St. & Fair Drive
Hours: Fri. 6p.m.-10p.m.; Sat. 9:30-4; Sun. 10-3
Jeff Lines (760) 872-6597
Email: franceem@qnet.com

May 9-10 2009, Reno, NV

Reno Gem and Mineral Society
Reno Livestock Events Center Exhibit Hall
1350 N. Wells Ave., Reno, NV
Hours: Sat. 10 - 5, Sun. 10-4

MGSCV Petrograph - April 2009

Dues are payable by mail. Please fill out the membership form below, include a check for the proper amount (**make payable to MGSCV**), enclose a self-addressed, stamped envelope and mail to the club at the following address:

Mineral & Gem Society of Castro Valley, Attn:Membership Chair, P.O. Box 2145, Castro Valley, CA 94546

Upon receipt of your check and application, your membership is immediately active. Your application will be processed and membership cards will be mailed to you within 4 weeks of receipt. Upon processing, your name will be entered into our membership database, added to the roster and emailing list for the Petrograph (our newsletter) and entered into the drawing for cash prizes for attendance at general meetings. Please submit an email address so you can receive the Petrograph via email. Please note that this membership is good through December 31st.

Please email WorkShopManager@mgscv.org including your name, a contact phone number and a good time to call you so an orientation can be scheduled. At the time of orientation you will learn about the club and will start cutting your first cabochon which is one of the requirements for using the workshop.

Working at our annual show is also a requirement of membership. All members are expected to keep the 1st full weekend of March available and to work a minimum of 4 hours. The show is fun to work and is the reason we have the best workshop/club that we have. Membership dues cover less than 10% of our annual operating costs. It is our show that funds the club, shop and any activities. Shop services such as rock sawing, casting, special classes including faceting (etc.) will not be available to members who do not work at the show.

We are a non-profit club whose sole purpose is education. We exist to further the lapidary arts and geological sciences for all who are interested. All members should own and be familiar with the MGSCV Handbook. A stationary copy is available for review in the club's lobby and one can be emailed to you. If you wish to have a copy emailed: Please contact info@mgscv.org. Products produced in the shop can not be sold for profit.

Bonnie Andrade, Membership Chairperson

Membership Application

Type of Membership: (choose one)

- Single, January 1 to December 31st (\$35) Couple, January 1 to December 31st (\$60)
- Juniors with parents as members (\$1) Junior with out an adult (\$5)
- Associate - (Former member living more than 100 miles away) (\$17.50)
- Life Members (Voted in by the Board)

Name(s) (Please print all names couples/juniors): _____

Address: _____ City: _____ State: _____

Zip Code: _____ Phone Number: _(_____) _____

Email Address: _____

(Where we will email the monthly Petrograph to members - If you do not have email Check here)

Occupational Skills: _____

(In case we are in dire need of electrical, plumbing, mechanical, clerical or some other skill, we would like to have this on file.)

X Members Signatures: _____

I agree with the Bylaws and rules of the MGSCV.

PLEASE CHECK THE FOLLOWING IF YOU WOULD LIKE CONFIDENTIALITY:

- I do not want my address printed in the roster
- I do not want my telephone number printed in the roster
- I do not want my e-mail address printed in the roster

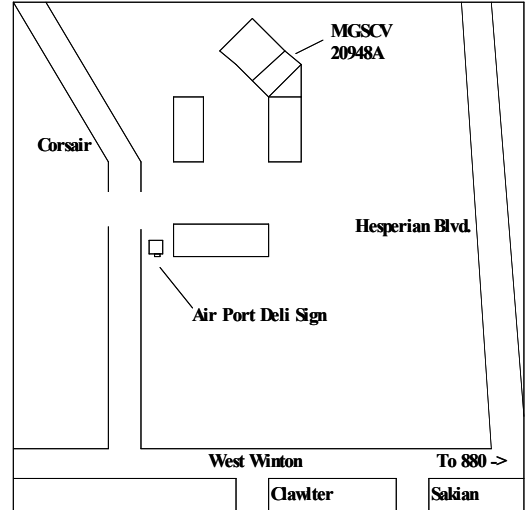
Send to: Mineral & Gem Society of Castro Valley, Attn:Membership Chair, P.O. Box 2145, Castro Valley, CA 94546

Shop Schedule (For members only)

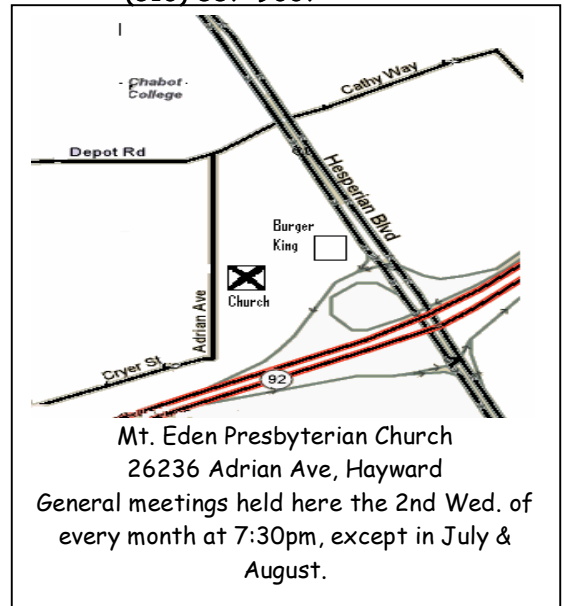
- Monday **10AM to 1PM**, Lapidary
7PM to 9PM, Beginners only
in lapidary
- Tuesday -Need Daytime Supervisor
Need Night Supervisor.
- Wednesday **-9AM to 1:30PM**, Lapidary,
intarsia & beading.
Library open 10AM to noon.
6PM to 9PM, Open again!
- Thursday Need Daytime Supervisor!
4PM to 9PM, Lapidary
- Friday Need Daytime and Night Supervisors!
Temporarily closed.
- Saturday **9AM to 5PM**, Juniors, adults
w/supervisor's approval
Library open 10AM to noon.
- Sunday **9AM to 2 PM**, Lapidary

We are in need of Shop Supervisors for Tuesday
Day and Night, Thursday Day
and Friday Day and Night.
If interested, please see Beth!

Website: www.mgscv.org
Email us at info@mgscv.org



Our shop: 20948 A Corsair Blvd
Hayward, CA 94545
(510) 887-9007



Mt. Eden Presbyterian Church
26236 Adrian Ave, Hayward
General meetings held here the 2nd Wed. of
every month at 7:30pm, except in July &
August.

PETROGRAPH

Bulletin of the Mineral and Gem Society
of Castro Valley, Inc.
Editor
P.O. Box 2145
Castro Valley, CA 94546

POSTMASTER:
DATED MATERIAL - TIME VALUE
Please deliver promptly, thank you.